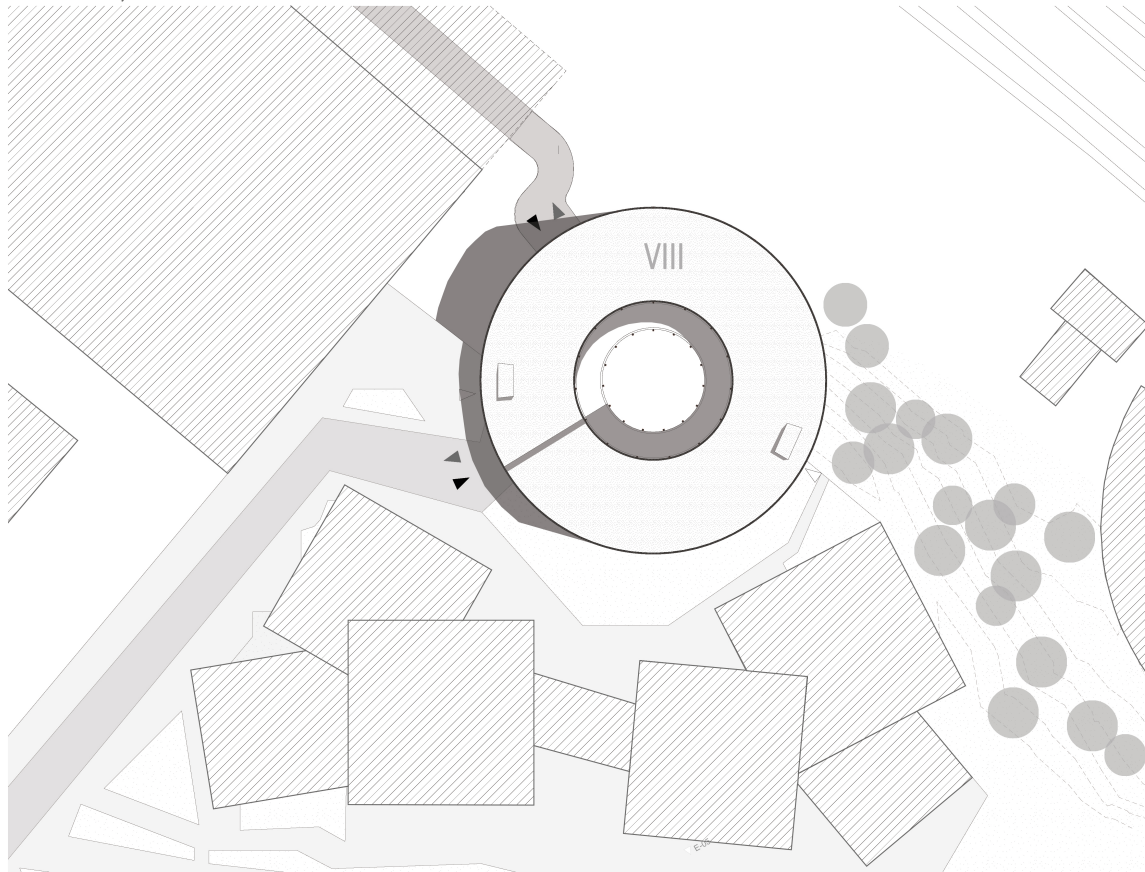




# T.U.R.F. - THE URBAN FOOD FACTORY

## SITE PLAN, scale 1:500



Located at Röntgenvägen 9 in Solna, Sweden, the P-Hus Solna Strand is an 11-storey parking facility designed to provide efficient and accessible mobility solutions for the surrounding office district. The building was inaugurated in March 2016, following the groundbreaking in the summer of 2014, and today offers 870 parking spaces. Among these, 42 are equipped with charging stations for electric vehicles, with infrastructure prepared for an equal number of additional stations in the future.

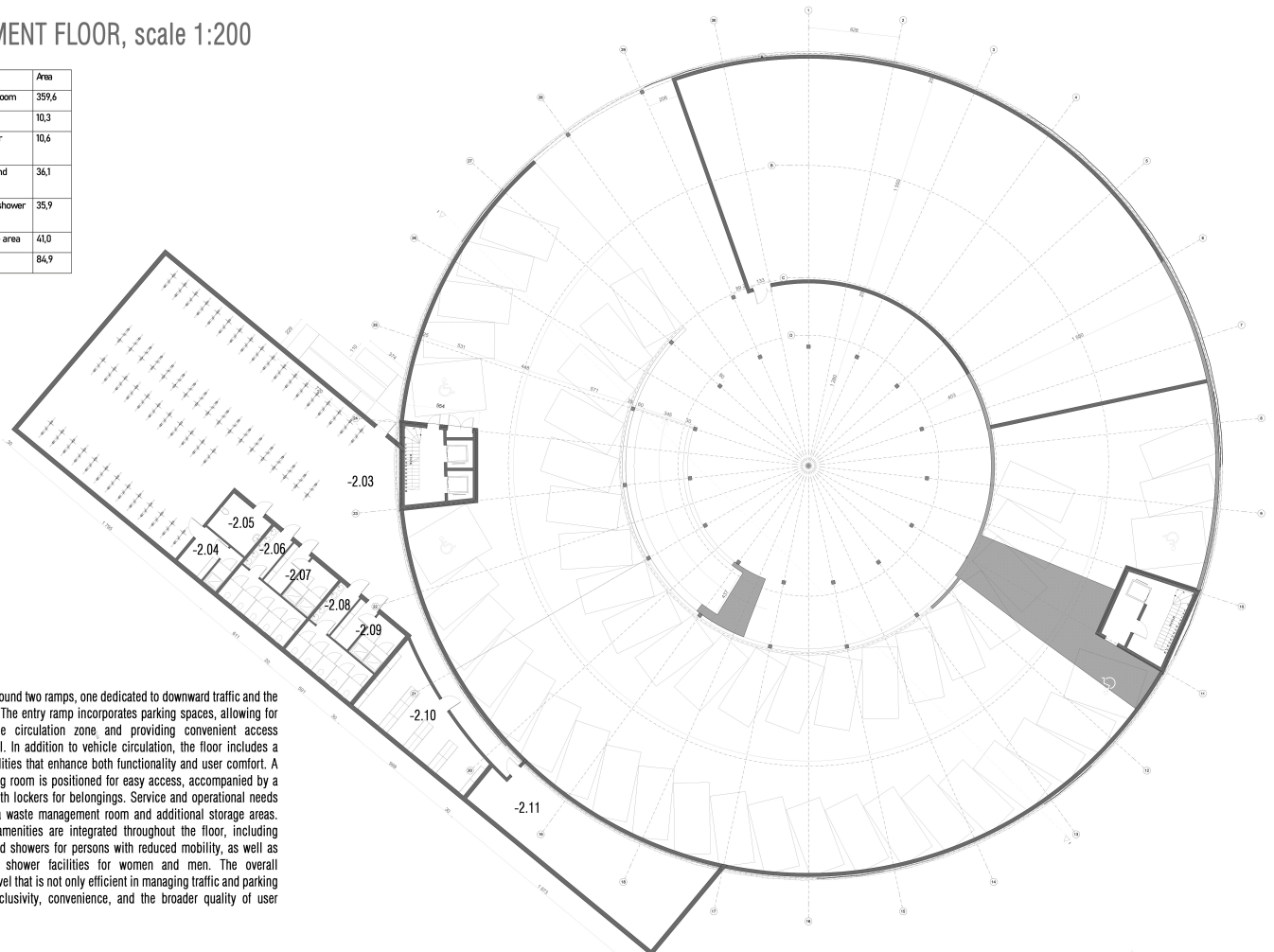
The circular form of the structure ensures optimal use of space and creates a strong architectural presence that harmonizes with the upcoming office buildings along Tritonvägen and Frösundaleden. Positioned adjacent to the railway tracks, the parking house maximizes visibility while contributing to the urban landscape.

Accessibility has been a central consideration in the design. The facility provides wheelchair-friendly entrances and parking spaces, ensuring inclusive use. Payment is flexible, with options for long-term rental contracts as well as hourly or daily rates.

- LEGEND
- ▬ Building under consideration
  - ▶ Car park exit
  - ◀ Car park entry
  - ◻ Building entry
  - ▨ Surrounding buildings
  - ▬ Road
  - ▬ Sidewalks
  - ▭ Grass areas
  - Trees

## 2ND BASEMENT FLOOR, scale 1:200

NR	Area designation	Area
-2.01	Bicycle parking room	359,6
-2.02	Accessible toilet	10,3
-2.03	Accessible shower facility	10,6
-2.04	Women's toilet and shower facilities	36,1
-2.05	Men's toilet and shower facilities	35,9
-2.06	Personal storage area	41,0
-2.03	Storage room	84,9

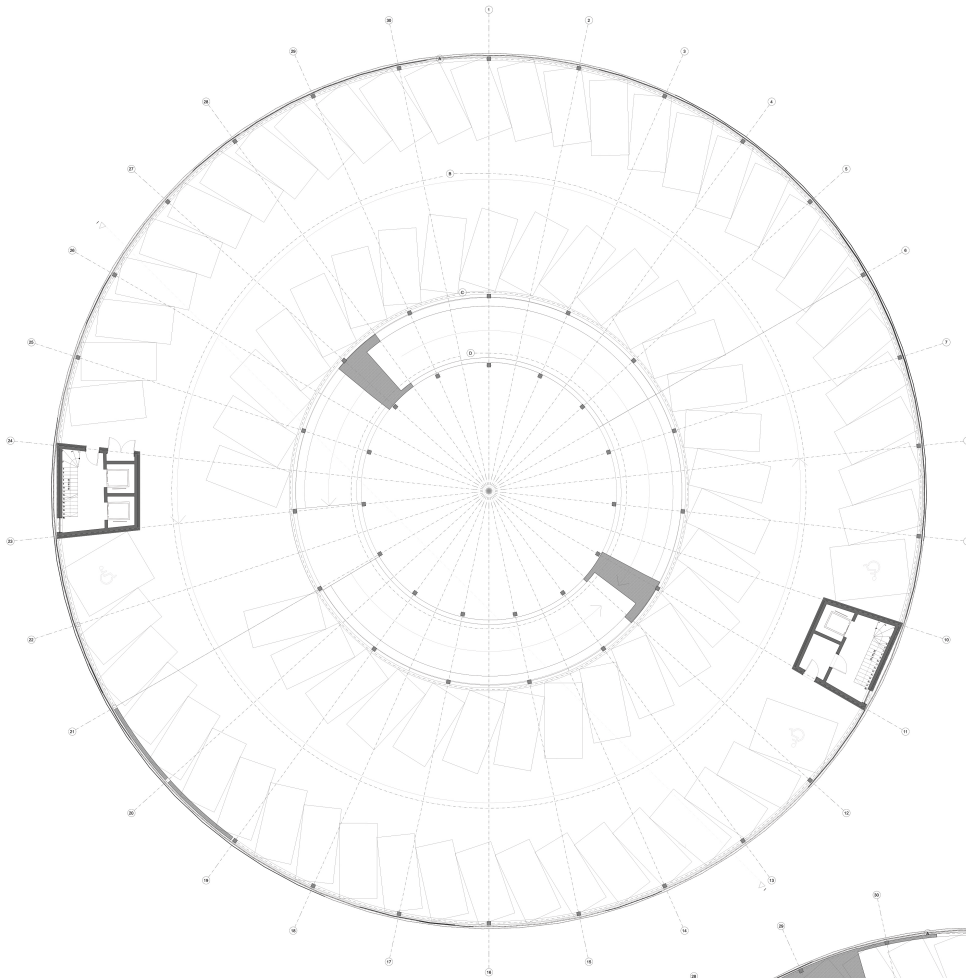


This level is organized around two ramps, one dedicated to downward traffic and the other to upward access. The entry ramp incorporates parking spaces, allowing for an efficient use of the circulation zone and providing convenient access immediately upon arrival. In addition to vehicle circulation, the floor includes a range of supporting facilities that enhance both functionality and user comfort. A dedicated bicycle parking room is positioned for easy access, accompanied by a personal storage area with lockers for belongings. Service and operational needs are addressed through a waste management room and additional storage areas. Sanitary and wellness amenities are integrated throughout the floor, including accessible restrooms and showers for persons with reduced mobility, as well as separate restroom and shower facilities for women and men. The overall arrangement creates a level that is not only efficient in managing traffic and parking but also attentive to inclusivity, convenience, and the broader quality of user experience.



# T.U.R.F. - THE URBAN FOOD FACTORY

## 1ST BASEMENT FLOOR, scale 1:200



Level -1 is designed around two separate ramps that carefully regulate internal traffic flow. The first ramp is intended for upward vehicle movement and also serves as a parking area, with numerous parking spaces distributed along its length. Among these, several bays are specifically designated for people with reduced mobility, ensuring full compliance with accessibility standards. This ramp also provides direct connections to two staircases, allowing convenient pedestrian access from the parking area to the upper levels.

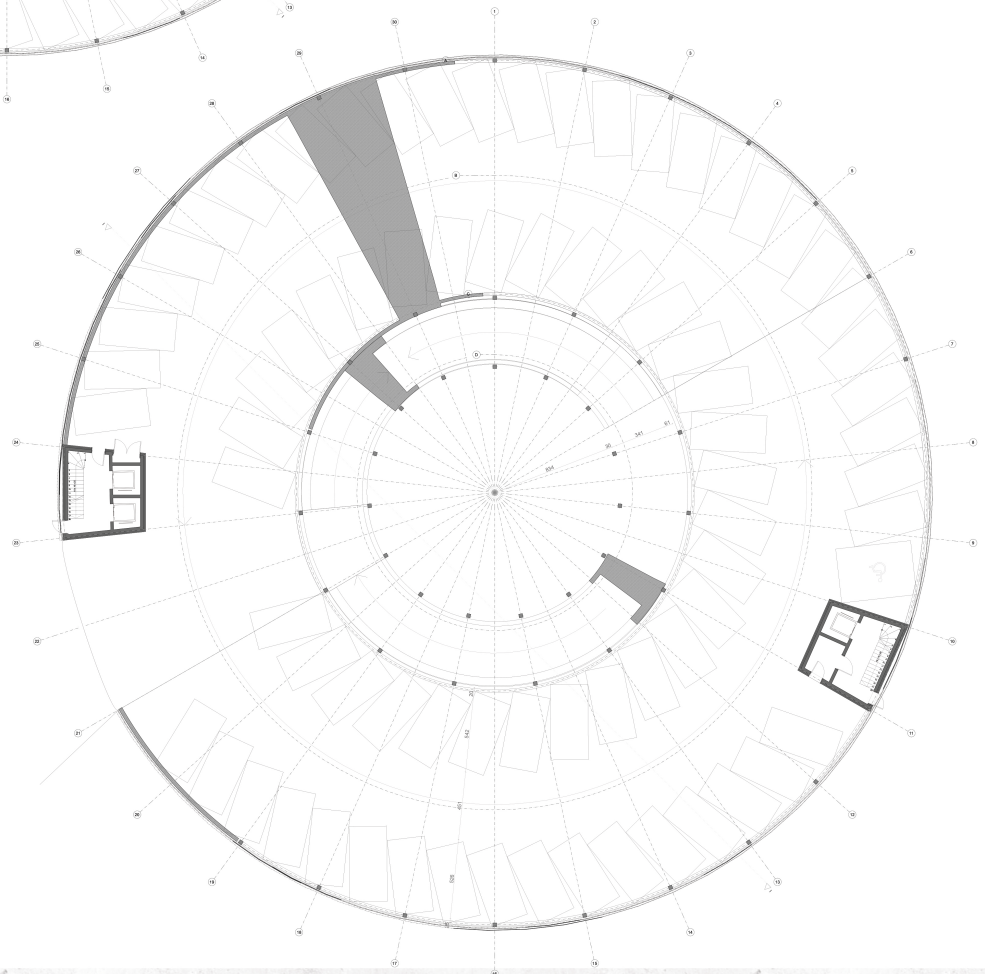
The second ramp, located internally, is dedicated exclusively to downward traffic. By separating the directions of movement into two independent ramps, the design ensures clear and orderly circulation. This layout significantly enhances user safety, minimizes the risk of congestion and collisions, and facilitates orientation within the parking level. Overall, the system creates a cohesive and intuitive traffic flow, providing smooth and convenient movement for both vehicles and pedestrians throughout the underground level.

## GROUND FLOOR, scale 1:200

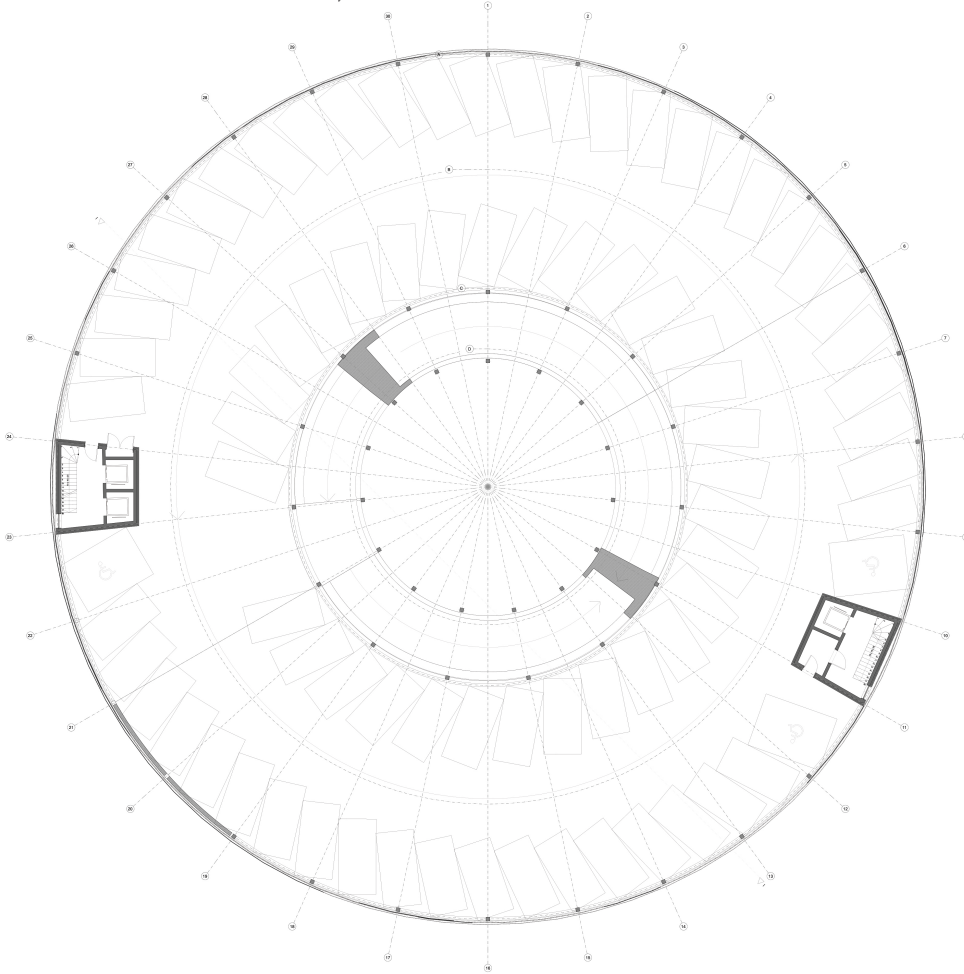
At Level 0, there is a second vehicle entrance to the building, which at Level -1, the circulation system of the building is further enhanced by the presence of a second vehicle entrance. This additional point of access complements the underground entry at Level -1 and creates a more flexible and efficient connection between the parking structure and the external road network. By distributing the flow of incoming vehicles across two different levels, the design reduces congestion at peak hours and ensures smoother traffic management both inside and outside the building. Alongside the vehicular access, this level also incorporates a secondary pedestrian entrance connected to one of the staircases, thereby offering alternative routes for users and reinforcing the principle of multiple entry and exit points for safety and convenience.

In total, Level 0 accommodates two staircases, reflecting the vertical circulation strategy that is consistently applied throughout the entire building. These staircases not only guarantee compliance with safety regulations but also create redundancy, allowing for uninterrupted access in case of emergency. Their presence ensures that all users, regardless of their point of entry, have direct and reliable vertical connections to the upper floors. Vehicular circulation is once again structured around two ramps, following the same logic as in the underground level: one ramp assigned to upward traffic, which leads to higher floors, and another reserved exclusively for downward traffic, guiding vehicles as they exit. This separation of directions enhances clarity, minimizes potential conflicts between ascending and descending vehicles, and optimizes the overall flow within the parking system.

The dual-ramp system is fully integrated into the functional layout of Level 0, aligning with the architectural strategy of efficiency, safety, and accessibility. Together with the staircases, it creates a balanced circulation network that serves both pedestrians and vehicles while maintaining a coherent relationship with the design of the lower and upper floors. This consistent approach to organization provides building users with a sense of orientation and reliability across all levels of the structure.

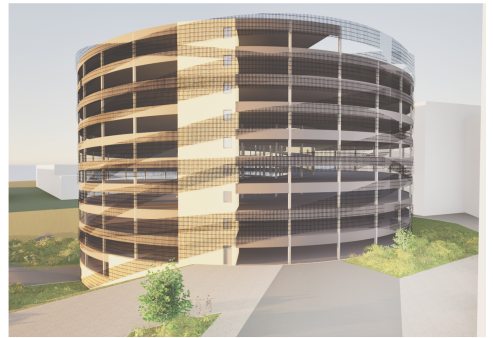


FLOOR PLAN – Levels 1 to 8, scale 1:200

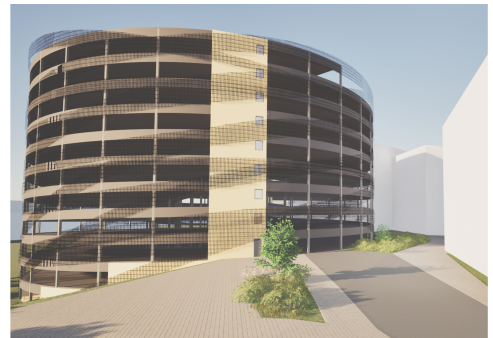
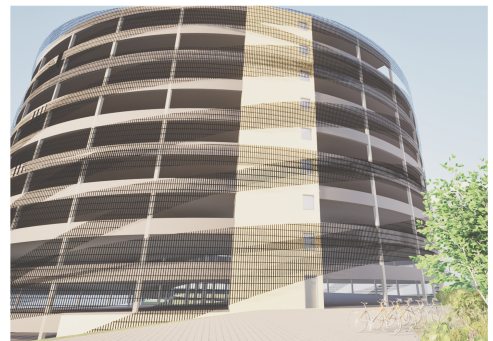
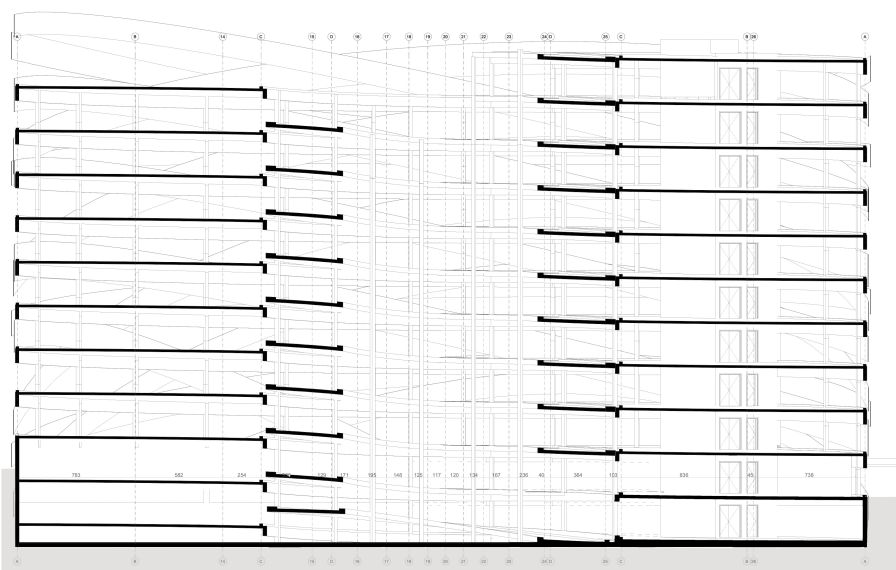


From the first up to the eighth floor, the building follows a system of repetitive levels, each designed with the same clear and functional layout. These typical floors are organized around two independent vehicle ramps that regulate circulation. The upward ramp not only provides access for cars moving to higher levels but also integrates parking spaces arranged along its length. Some of these spaces are specifically designated for people with disabilities, ensuring that the parking system is inclusive and compliant with accessibility standards. The downward ramp, located within the same circulation core, is exclusively dedicated to vehicles leaving the level, thereby separating the directions of movement and enhancing traffic safety. This dual-ramp strategy minimizes congestion, prevents conflicts between ascending and descending vehicles, and contributes to a smooth and predictable flow throughout the parking structure.

Each floor also contains two staircases that act as the main vertical communication cores for pedestrians. Their presence on every level provides users with multiple options for access and evacuation, improving safety and convenience. For individuals with reduced mobility, parking spaces are carefully positioned in close proximity to these staircases, reducing travel distances and ensuring that movement between the parking bays and the vertical circulation cores is straightforward and barrier-free. The repetition of this functional arrangement across all levels from the first to the eighth guarantees consistency, clarity of orientation for users, and efficient use of space within the overall design of the building.



SECTION I-I, scale 1:200



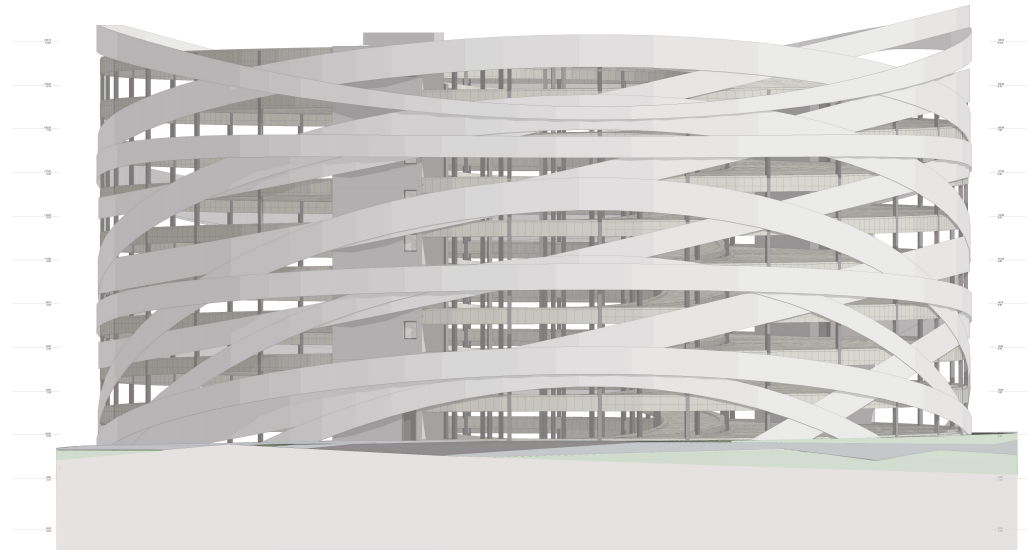
# T.U.R.F. - THE URBAN FOOD FACTORY

## SOUTHWEST ELEVATION, scale 1:200

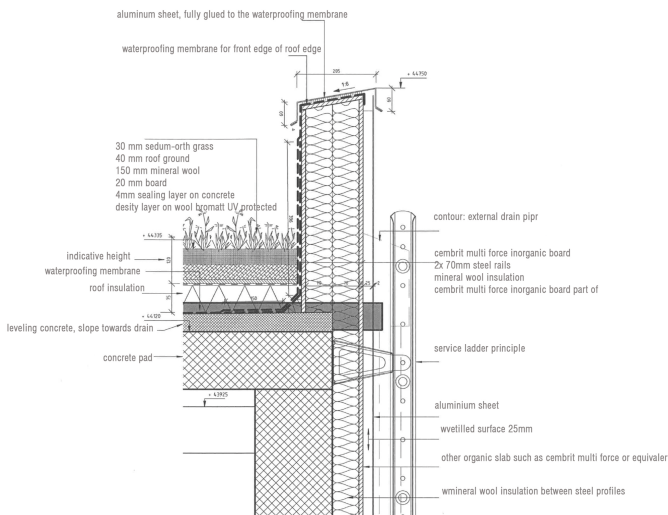
The building presents a distinctive circular form, with a perforated, or "azurowa," façade that elegantly wraps around the entire structure, creating a visually dynamic and engaging composition. The façade's intricate pattern introduces a sense of movement and depth, allowing light and shadow to interact across the surface and giving the building a lively, almost sculptural quality.

The southwest elevation is particularly prominent, as it is visible from ground level (Level 0), where the second vehicle entrance to the underground garage is located. Along this elevation, the staircase cores are consistently expressed as protruding elements, each featuring a window that brings natural light into the interior stairwells while also contributing to the vertical rhythm and visual interest of the façade.

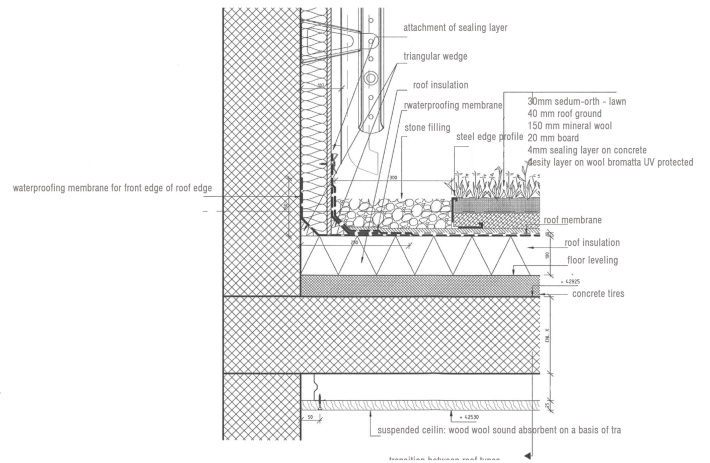
The combination of the perforated cladding, the wrapping form, and the interplay of solid and transparent elements results in a façade that is both functional and expressive. It seamlessly integrates practical requirements—such as garage access and stairwell lighting—with a contemporary aesthetic, producing a unique, dynamic architectural statement that emphasizes movement, transparency, and spatial layering.



## DETAIL 1



## DETAIL 2



## NORTHWEST ELEVATION, scale 1:200

The northwest elevation shares the same design language and elements as the southwest façade, featuring the circular form and perforated, wrap-around cladding that creates a dynamic and visually engaging composition. This elevation is distinguished by the second garage entrance, located at Level -2, which integrates seamlessly into the overall façade design.

An additional feature of the northwest elevation is the noticeable change in terrain, which the building responds to by adjusting the height and alignment of the cladding and stair cores. The staircase cores remain a consistent element, each incorporating windows that allow natural light to illuminate the interior stairwells while maintaining the vertical rhythm and continuity of the façade.

The combination of the perforated façade, the wrapping form, and the adaptation to the terrain variation results in a harmonious and expressive architectural composition. Functional elements, such as the garage access and stairwell lighting, are fully integrated into a contemporary aesthetic, producing a façade that is both practical and visually dynamic, with a strong sense of movement and depth.

