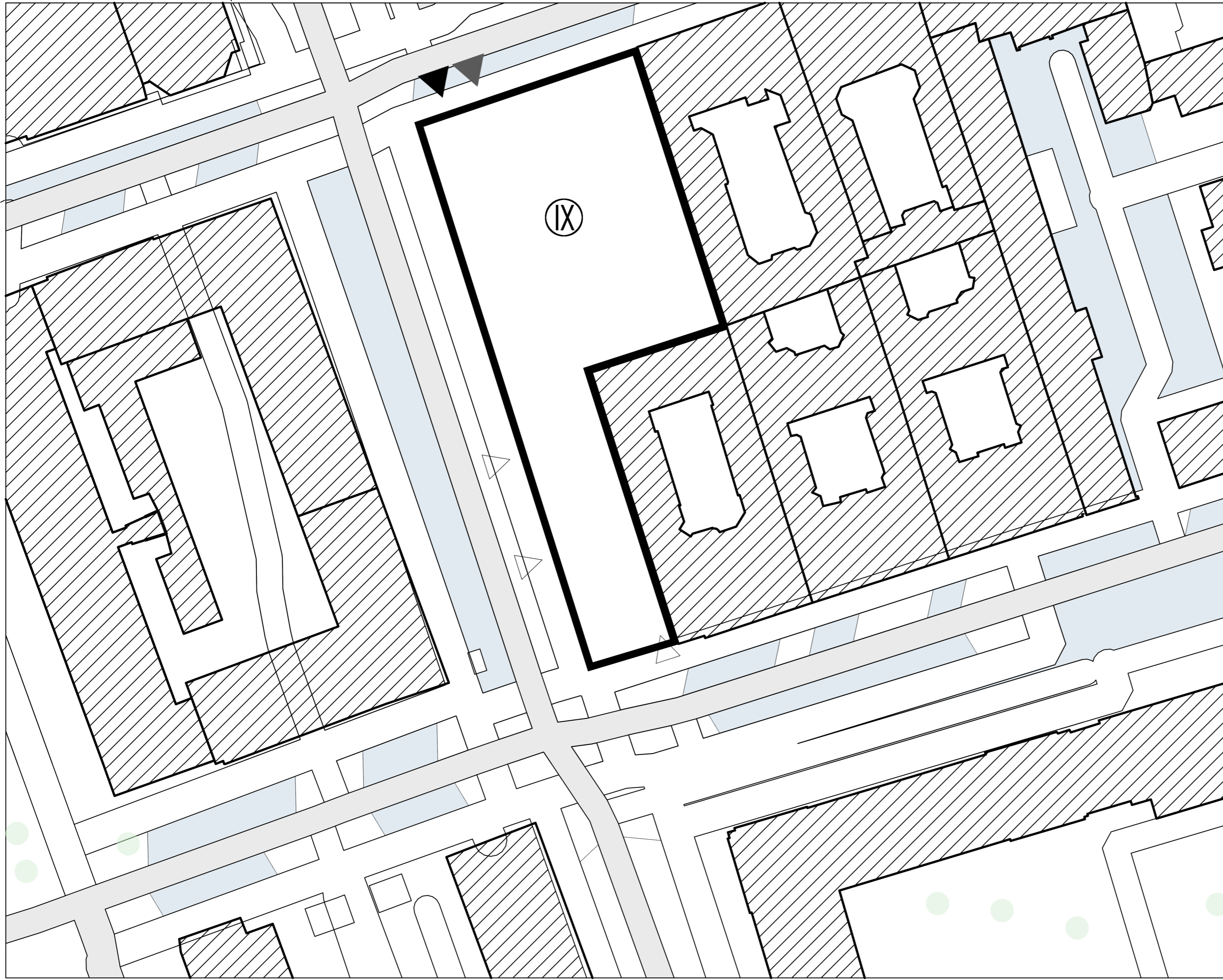




T.U.R.F. - THE URBAN FOOD FACTORY

SCENARIO 1: MIXED FUNCTION - PARKING, FOOD PRODUCTION, AND SOCIAL FUNCTION

SITE PLAN, scale 1:500



The multi-story parking lot on Parkingowa Street in Warsaw is a landmark located in the Downtown district, near such places as the Novotel Hotel, the Cervantes Institute and the District Court at 82 Marszałkowska Street. It was built in the 1970s as a back-up for the then Forum Hotel (now Novotel). At the time, it was one of the first facilities of its kind in Warsaw, capable of accommodating more than 700 cars.

The building is distinguished by its modernist architecture from the communist era, with a distinctive concrete facade. In the 1970s and 1980s, it was considered modern, and its aesthetics followed Western models.

Parking is paid, and the charge per hour was 4 zloty. The facility is available to drivers 24 hours a day and is an important parking point in the center of Warsaw, especially for those visiting nearby institutions and facilities.

Thanks to its location and capacity, the parking lot on Parkingowa Street has for years played an important role in Warsaw's transportation infrastructure, offering drivers a convenient place to park in the heart of the city.

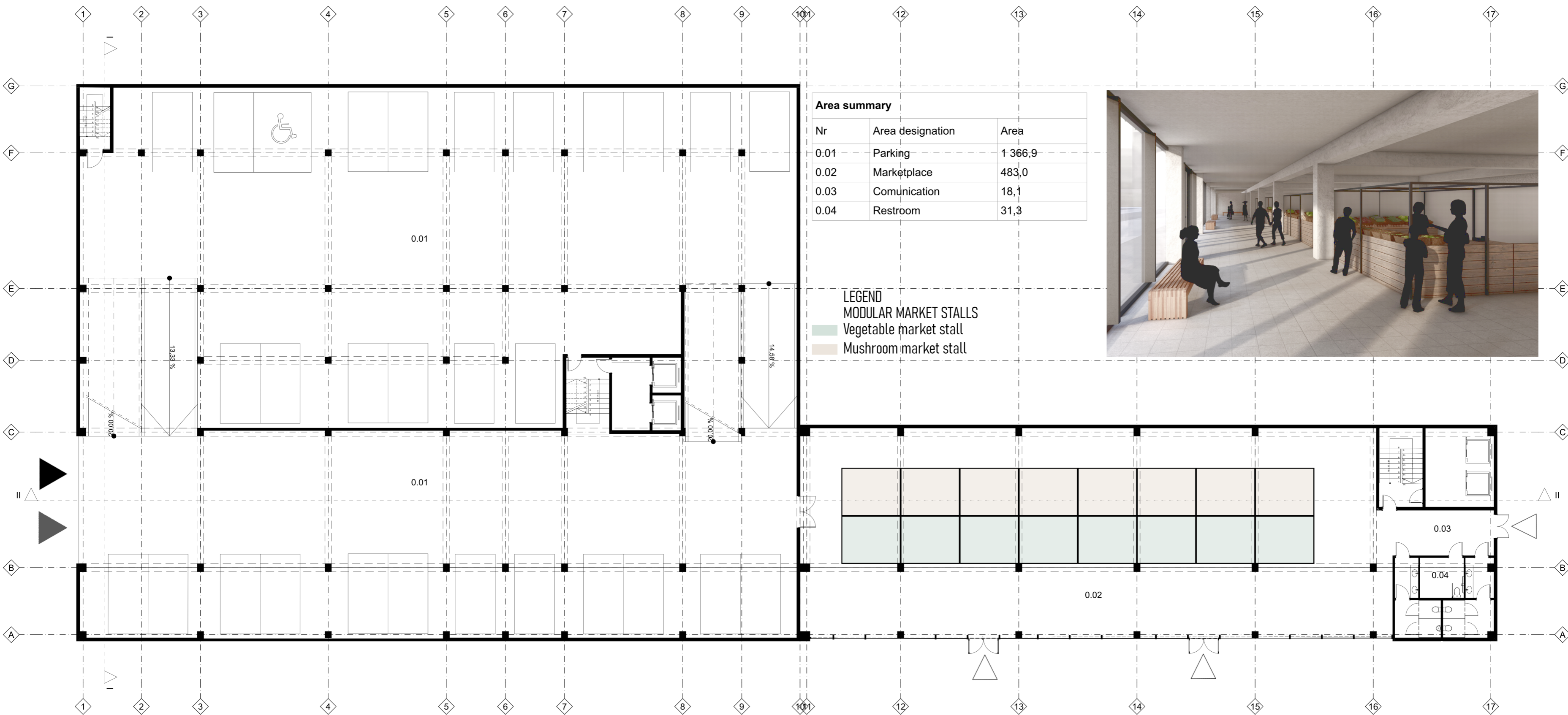
This parking lot consists of 9 floors and is 25 m high.

LEGEND

- Building under consideration
- ▲ Car park exit
- ▼ Car park entry
- △ Building entry
- ▬ Surrounding buildings
- ▬ Road
- ▬ Parking lot
- Greenery

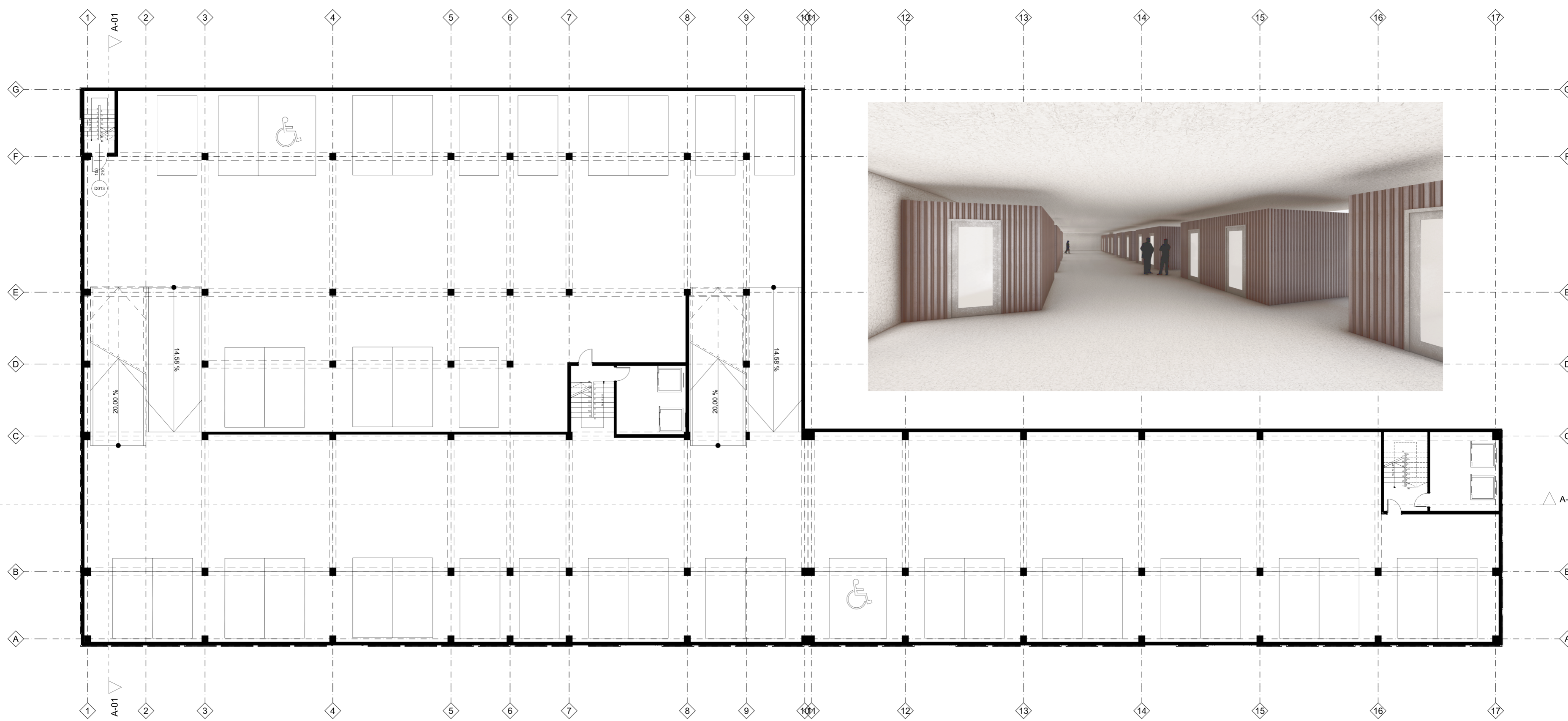
GROUND FLOOR PLAN, scale 1:200

PARKING | MARKETPLACE



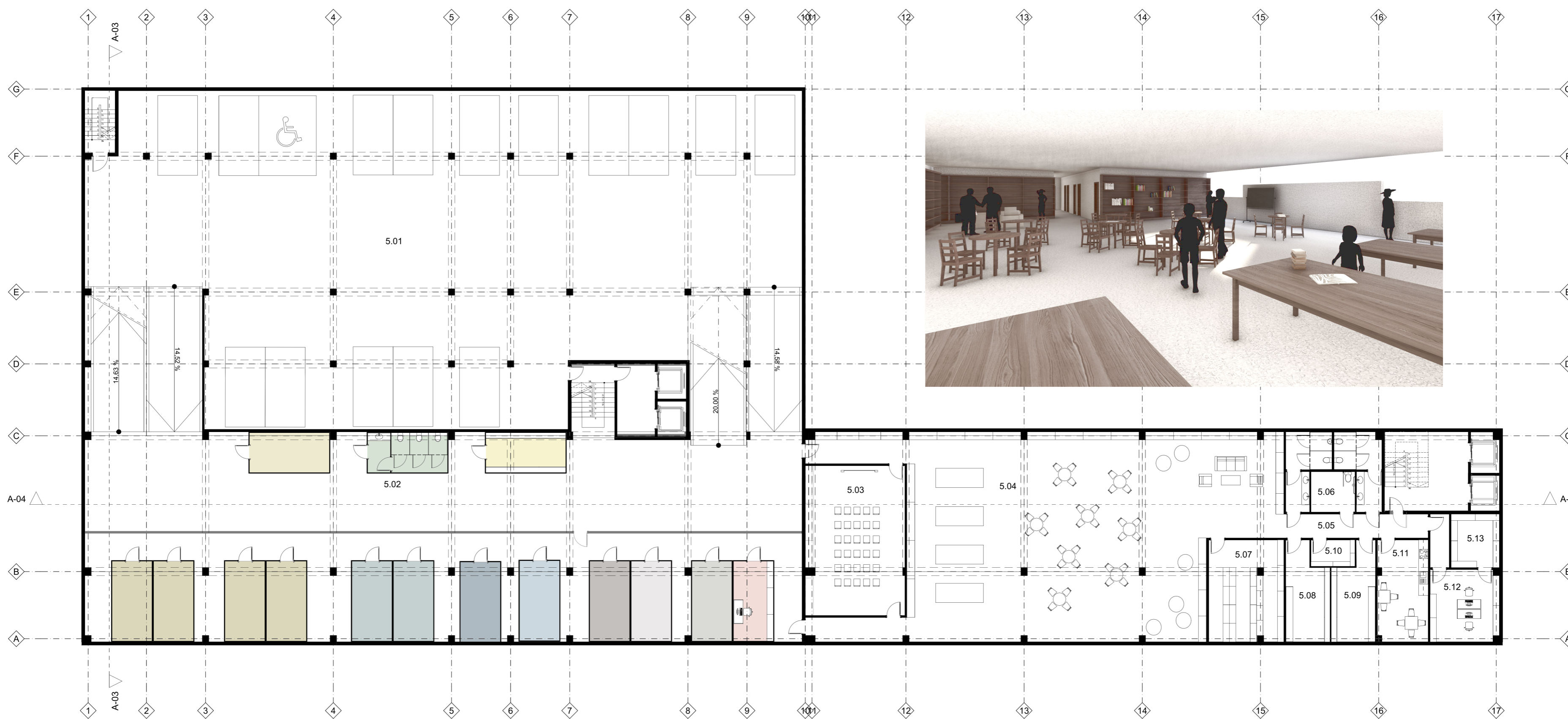
1ST FLOOR, repeatable storey, scale 1:200

PARKING (FLOORS 1 - 4)



5TH FLOOR, repeatable storey, SCALE 1:200

PARKING | CULTIVATION | SOCIAL SPACES



- LEGEND**
AQUAPONIC MODULES
- Control
 - Growing
 - Fish
 - Fish processing
 - Filtration
 - Bio-battery
 - Storage
 - Staff room
 - Administration
 - Changing room
 - Restroom

Area summary					
Nr	Area designation	Area			
5.01	Parking	780,8	5.08	Men's locker room	15,5
5.02	Modular cultivation	590,6	5.09	Women's locker room	15,0
5.03	Lecture room	58,2	5.10	Utility room	4,5
5.04	Workshop area	299,0	5.11	Staff room	20,0
5.05	Communication	17,8	5.12	Administration	19,3
5.06	Restroom	30,3	5.13	Archive	10,1
5.07	Storage	29,6			
					1 890,7 m²

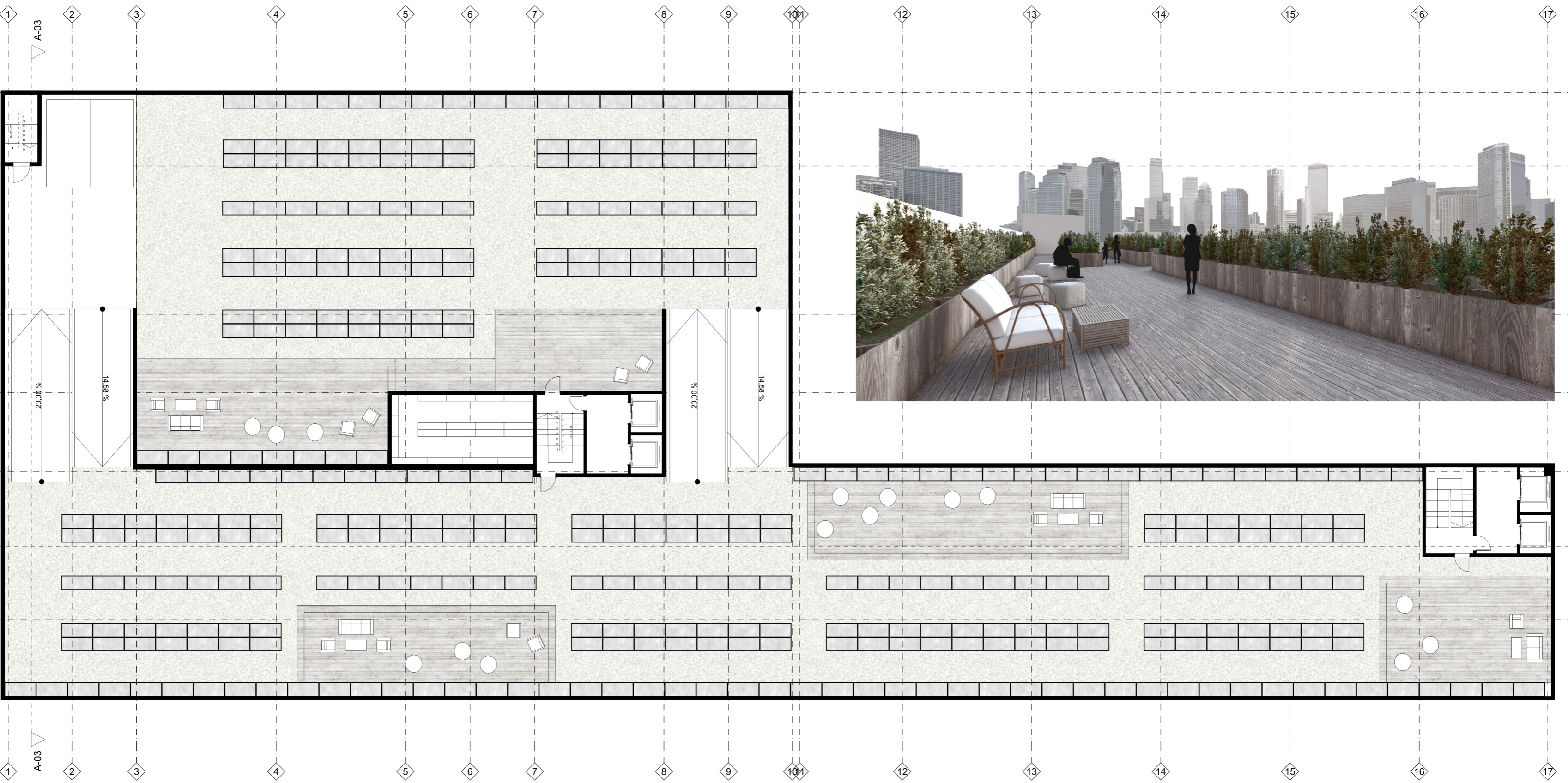
T.U.R.F. - THE URBAN FOOD FACTORY

WESTERN FACADE, scale 1:200



ROOF, scale 1:200

GARDEN WITH LEISURE SPACE



VISUALISATIONS

